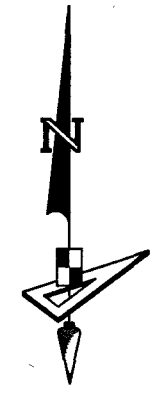


# RESIDENCES AT MARINA VILLAGE

BEING IN PART A REPLAT OF A PORTION OF LOTS 1-10, AND 15-22, AND A PORTION OF CENTRAL AVENUE (40 FEET WIDE RIGHT-OF-WAY) AND THE 10 FOOT WIDE ALLEY AND THE TWO 15 FOOT WIDE ALLEYS, CENTRAL ADDITION TO RIVIERA, AS RECORDED IN PLAT BOOK 10, PAGE 71, AND TOGETHER WITH THAT PORTION OF EAST 12TH STREET, PLATTED AS MOUND AVENUE, PLAT OF RIVIERA, AS RECORDED IN PLAT BOOK 2, PAGE 90, BOTH OF THE PUBLIC RECORDS OF PALM BEACH COUNTY, FLORIDA, BETWEEN U.S. HIGHWAY 1, AND AVENUE "C", PLATTED AS OAK STREET, LYING IN SECTION 33, TOWNSHIP 42 SOUTH, RANGE 43 EAST, CITY OF RIVIERA BEACH, PALM BEACH COUNTY, FLORIDA.

153

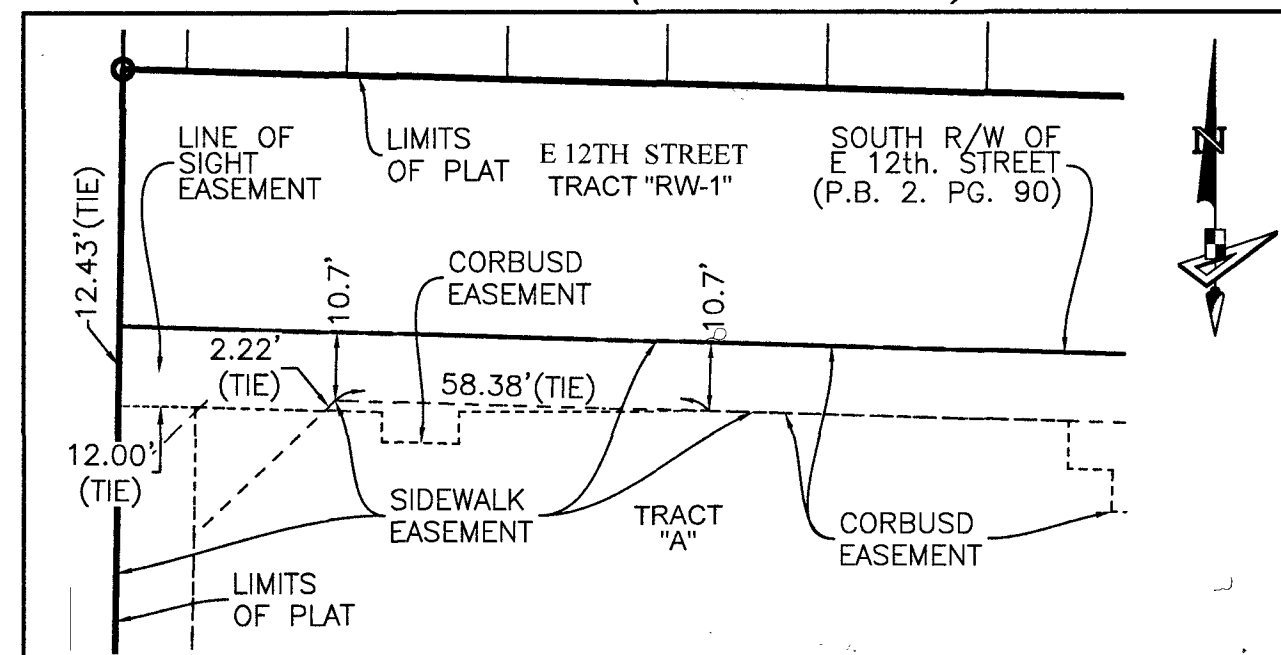


SCALE 1" = 30'

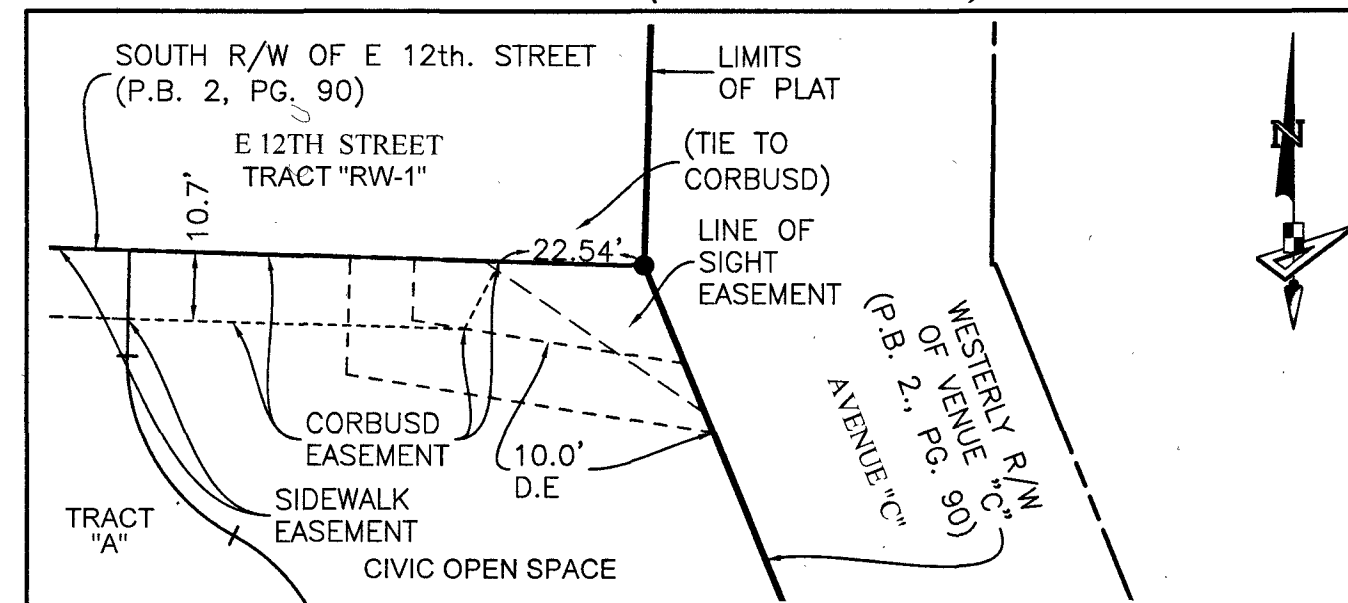
0 15 30 60

SEE NOTE ON SHEET 1 FOR BASIS OF BEARINGS

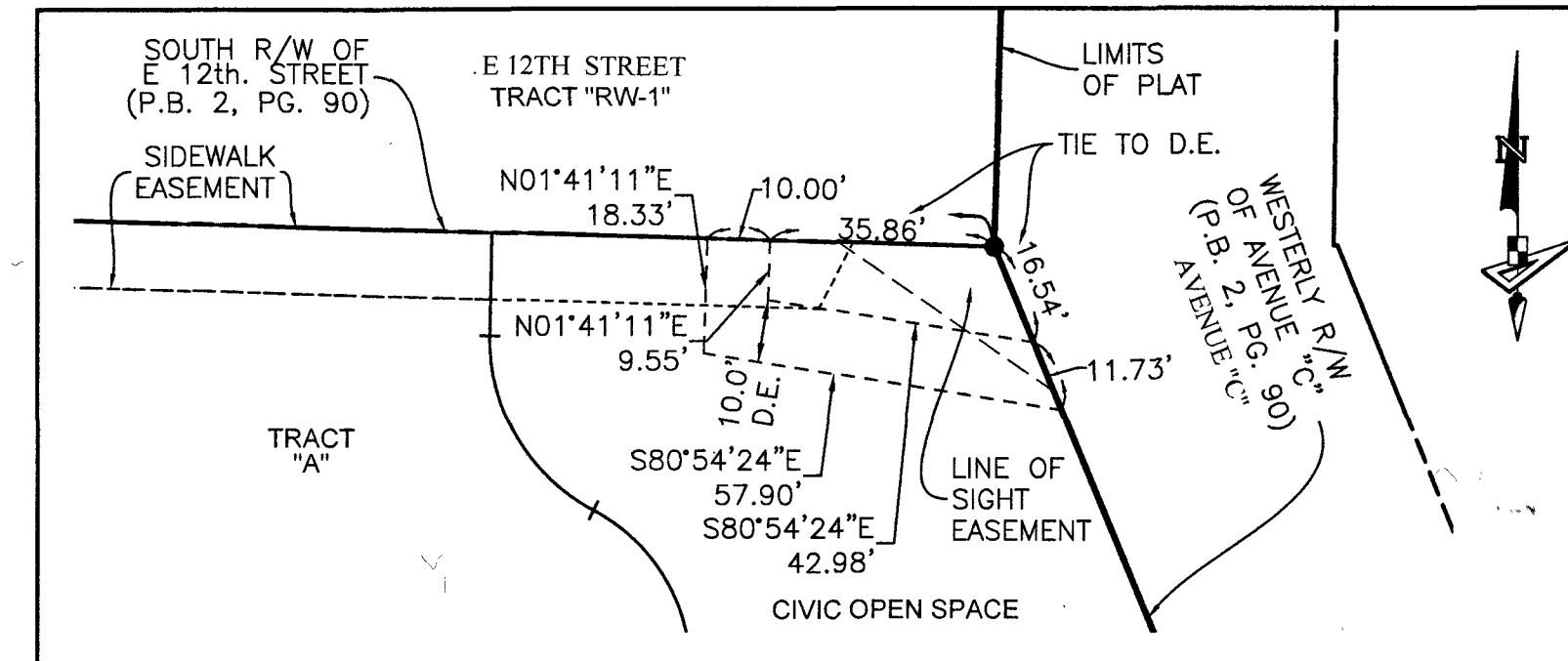
DETAIL "A" (SCALE: 1"=30')



DETAIL "B" (SCALE: 1"=30')



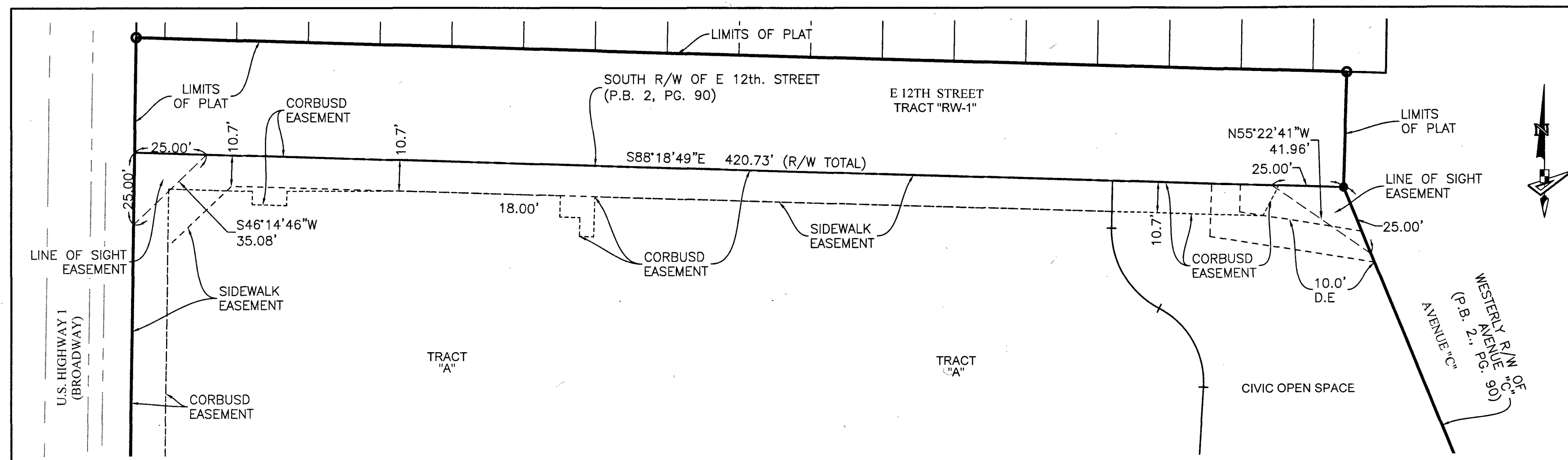
DETAIL "C" (SCALE: 1"=30')



## LEGEND

- P.B. ---- PLAT BOOK
- PG. ---- PAGE
- O.R./O.R.B. ---- OFFICIAL RECORDS BOOK
- P.O.B. ---- POINT OF BEGINNING
- U.E. ---- UTILITY EASEMENT
- P.B.C. ---- PALM BEACH COUNTY
- P.C. ---- POINT OF CURVATURE
- P.T. ---- POINT OF TANGENCY
- P.R.C. ---- POINT OF REVERSE CURVATURE
- N.T.I. ---- NON-TANGENT INTERSECTION
- R/W ---- RIGHT-OF-WAY
- O/S ---- OFF-SET
- (TYP.) ---- TYPICAL
- CL ---- CENTER LINE OF ROAD
- FDOT ---- FLORIDA DEPARTMENT OF TRANSPORTATION
- EASE ---- EASEMENT
- LB ---- LICENSED BUSINESS
- PRM ---- PERMANENT REFERENCE MONUMENT
- CORBUSD ---- CITY OF RIVIERA BEACH UTILITY SPECIAL DISTRICT
- Q ---- QUARTER SECTION LOCATION
- /PRM ---- SET 1/2" IRON ROD WITH PRM CAP STAMPED "PRM LB 7768"
- /SMGD ---- SET MAG NAIL & DISK STAMPED "PRM LB 7768"

DETAIL "D" (SCALE: 1"=30')



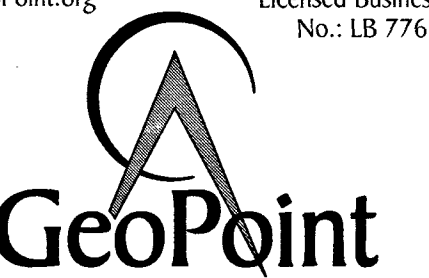
STATE PLANE COORDINATE NOTES:

- a. ALL DISTANCES ARE GRID
- b. SCALE FACTOR=1.0000339
- c. COORDINATE SYSTEM = 1983 STATE PLANE TRANSVERSE MERCATOR PROJECTION
- d. COORDINATES SHOWN ARE GRID COORDINATES
- e. ZONE = FLORIDA EAST ZONE
- f. DATUM = NAD 83-1990 ADJUSTMENT
- g. GROUND DISTANCE X SCALE FACTOR = GRID DISTANCE
- h. LINEAR UNIT = U.S. SURVEY FEET
- i. PLAT BEARINGS = GRID BEARINGS
- j. NO ROTATION

NOTICE: THIS PLAT, AS RECORDED IN ITS GRAPHIC FORM, IS THE OFFICIAL DEPICTION OF THE SUBDIVIDED LANDS DESCRIBED HEREIN AND WILL IN NO CIRCUMSTANCES BE SUPPLANTED IN AUTHORITY BY ANY OTHER GRAPHIC OR DIGITAL FORM OF THE PLAT. THERE MAY BE ADDITIONAL RESTRICTIONS THAT ARE NOT RECORDED ON THIS PLAT THAT MAY BE FOUND IN THE PUBLIC RECORDS OF PALM BEACH COUNTY.

THIS INSTRUMENT PREPARED BY  
GARY A. RAGER, P.S.M.  
LS4828 STATE OF FLORIDA.  
GEOPOINT SURVEYING, INC.  
4152 WEST BLUE HERON BOULEVARD, SUITE 106,  
RIVIERA BEACH, FLORIDA 33404.  
CERTIFICATE OF AUTHORIZATION NO. LB7768

www.GeoPoint.org Licensed Business  
No.: LB 7768



4152 West Blue Heron Blvd  
Suite 106  
Riviera Beach, Florida 33404  
Phone: (561) 444-2720